

BARLOW GARFIELD

A NEIGHBORHOOD VISION

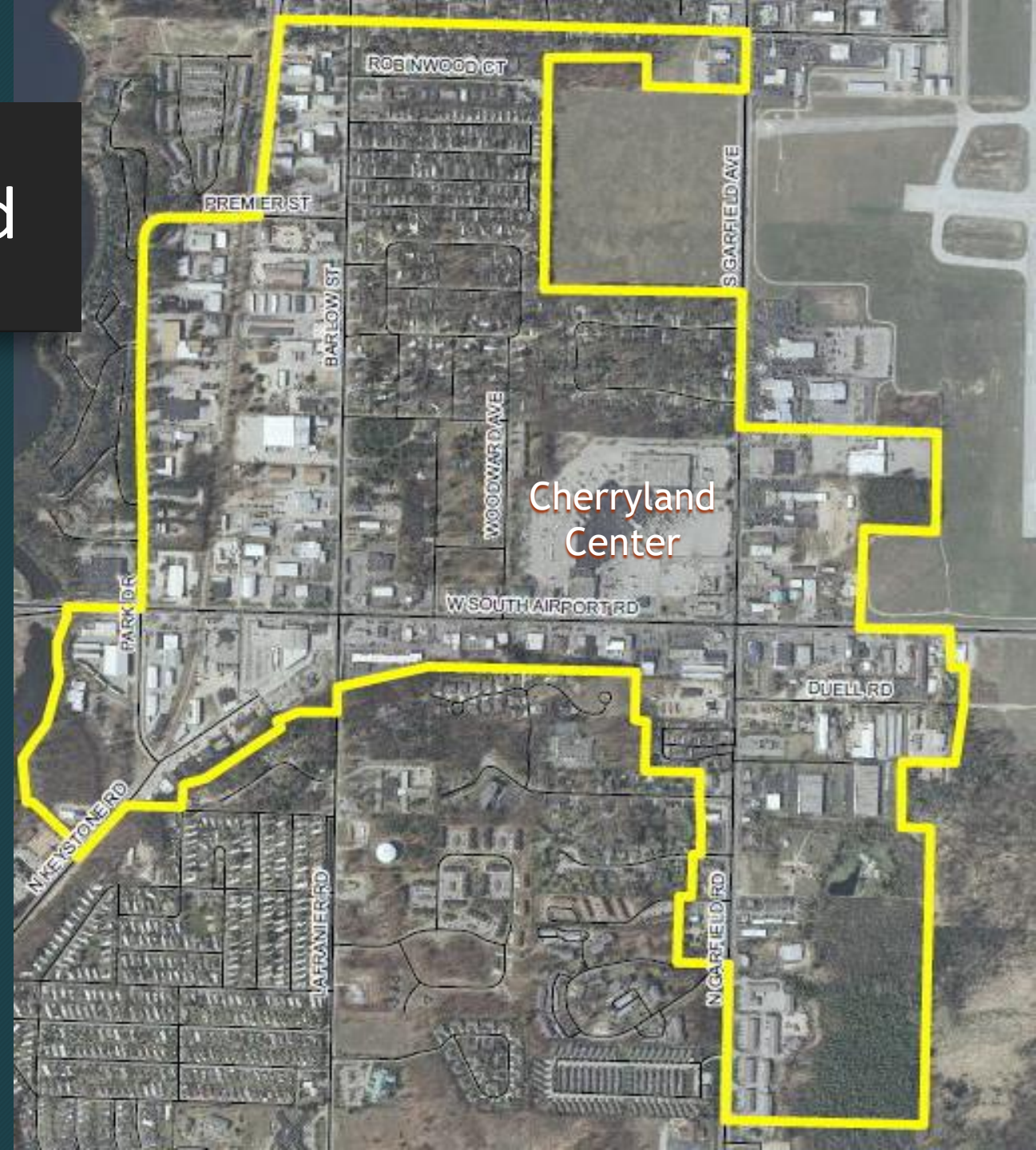
Charter Township of Garfield



Welcome to the Neighborhood

The Barlow Garfield Neighborhood is a connected, livable, community center within Garfield Township. The neighborhood is a destination for shopping and services with sidewalks and improved streets. The neighborhood provides a variety of housing choices, public gathering places, and parks.

- *Downtown Traverse City:* 3.5 miles
- *Airport Terminal:* 1 mile
- *Grand Traverse Mall:* 2.5 miles



Public Engagement

- **An Evening with Bob Gibbs**

- Changing retail trends, economic challenges, and development/design strategies for communities

- **Survey of Property Owners**

What people like

- Convenient location in region
- Close to retail and commercial
- Quiet neighborhoods
- Trees/wooded areas

What people don't like

- Cherryland Center decline
- Lack of sidewalks
- Traffic congestion/speeding
- Poor condition of roads
- Poorly maintained properties

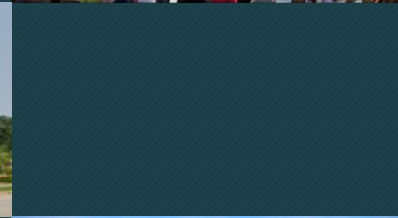
What people want to see

- Cherryland Center redevelopment
- Sidewalks/pathways
- Reduce traffic congestion/speeding
- More trees and park areas
- Enforce junk ordinance



Development Principles

- Mixed-Use Development
- New Public Spaces
- Increased Connectivity
- Quality Site Design
- Expanded Housing Choices
- Improved Infrastructure



Development Opportunities

- High Demand for Housing
- Investment Incentives
 - *Opportunity Zone*
 - *New Markets Tax Credit (NMTC) designated area*
 - *Brownfield Redevelopment*
 - *Corridor Improvement Authority*
- Great Potential for Increased Walkability

Barlow Street

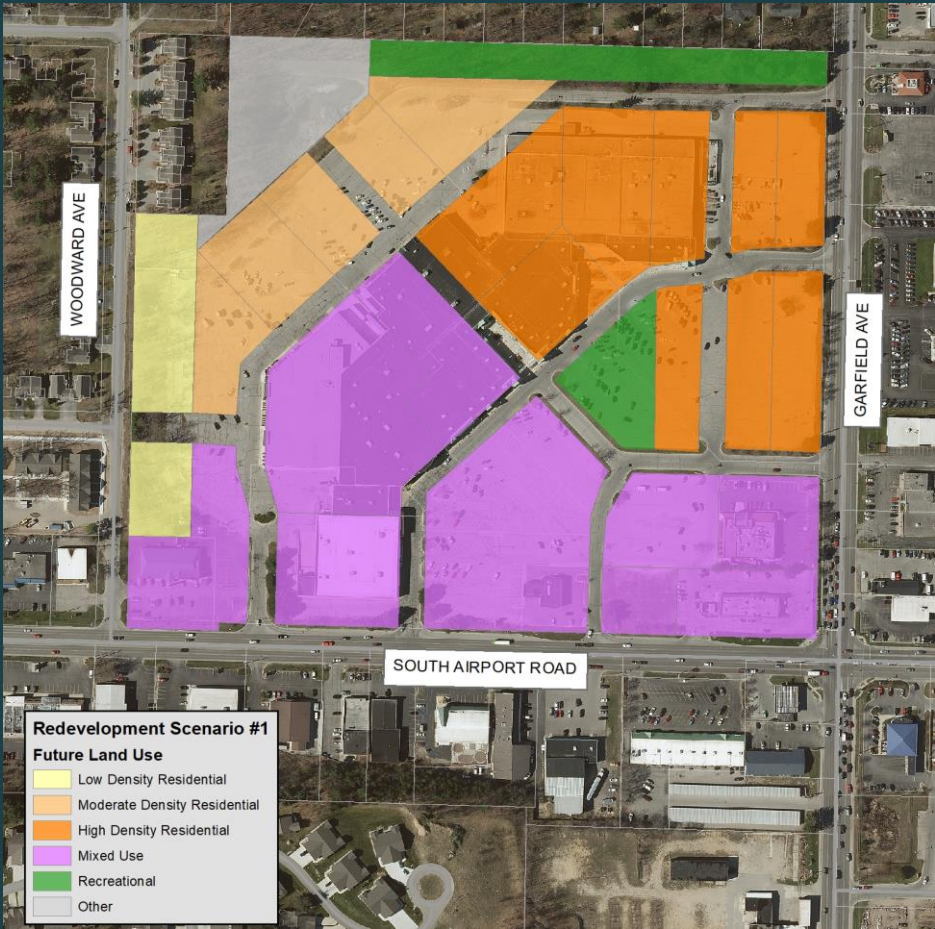


Cherryland Center



Redevelopment Land Use Scenarios

REDEVELOPMENT SCENARIO #1



REDEVELOPMENT SCENARIO #2



Village Concept



- **Walkable Scale**
- **Connected Community (Broadband)**
- **Blended Home/Office Units**
- **Creative Spaces/Shared Offices**
- **Outdoor Recreation/Parks**
- **Convenient Retail**
- **Event/Entertainment Venues**

Contact Us

BARLOW GARFIELD
A NEIGHBORHOOD VISION

www.garfield-twp.com

John Sych, AICP
Planning Director

231-225-3155

jsych@garfield-twp.com

Stephen Hannon, AICP
Deputy Planning Director

231-225-3156

shannon@garfield-twp.com