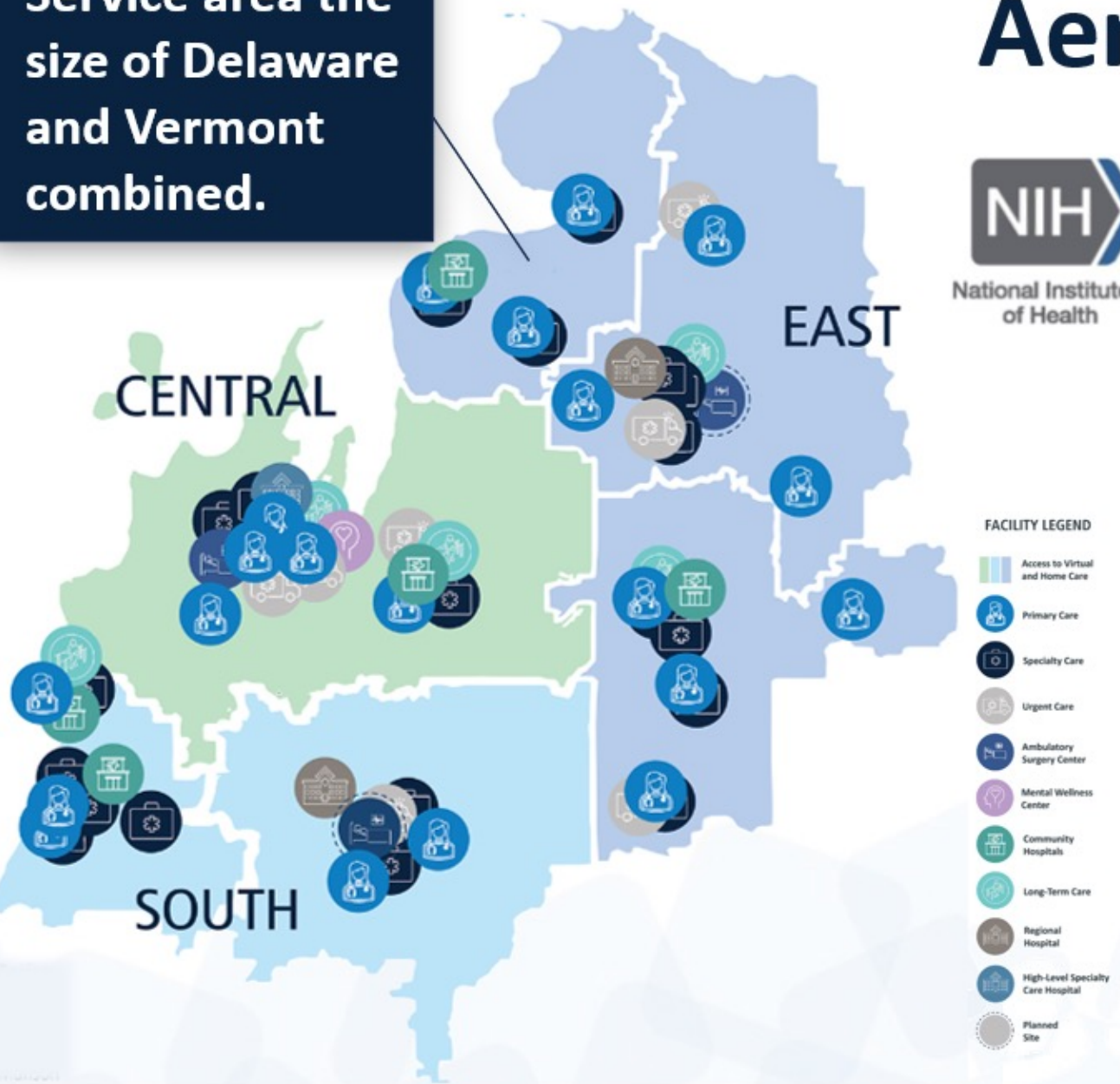




COMMUNITY INFO SESSION:
AERIAL MEDICAL
DELIVERY IN TRAVERSE CITY

OCTOBER 16 • 2:30 - 3:30 PM
@ TRAVERSE CONNECT

Service area the size of Delaware and Vermont combined.



Aerial Medical Delivery

Travel and Transportation cited as a major barrier to healthcare access.

- Delivery of medications and home health supplies to remote locations.
- Provides flexibility to better position staff to support direct patient care.



MADE IN
MICHIGAN

Protect payload & enable end-to-end autonomy

- Integrated payload bay
- Multiple access points

 **blueflite**

Reliability and easy repair:

- 8x propulsion systems
- Quick release mechanism

Attractive unit economics & customization:

- Modular design
- 3D print technology

Vectored thrust for high precision flight and long range

Pre-Hospital Blood Delivery via Drone



PROBLEM IDENTIFICATION: POST-CRASH CARE NATIONAL STATISTICS

42,514
PEOPLE DIED
IN TRAFFIC CRASHES...⁴

Fatality Analysis Reporting System (FARS)



...BUT **42%**
OF THOSE
WERE ALIVE WHEN FIRST
RESPONDERS ARRIVED.⁴

FARS



**NATIONAL HIGHWAY TRAFFIC
SAFETY ADMINISTRATION**

Medical Delivery

DroneUp is demonstrating automation and extended range capabilities for the Medical community

Carilion Clinic



Project Goals

Improve on 2023 Phase 1 Operations:

- Automation introduction
- Flight volume
- Extended range
- Deconfliction with MEDEVAC

Results

- 35 flights to DBX - pickup and dropoff
- Urgent-need Rx and high-value medical supply deliveries
- 103 flights (+35%) @ 6.5min delivery time over 5 days
- 200lbs total payload delivered
- 2.5X range, delivering up to 3 miles with 4 new routes
- Deconfliction procedures & DAA increased uptime by 60%

Next Steps

- Community hospital resupply @ longer-range (30 mi)
- Patient Rx home delivery
- Ecosystem SW and Infrastructure deployment
- Federal or State funding

Riverside Health



Project Goals

DOT SMART Grant Project:

- 17 mile delivery mission to remote area
- Patient Rx delivery
- Gradually expanded operational areas supported by BVLOS waivers

Results

- Delivering Rx to control patient group since Sept '23
- 2 BVLOS waivers approved (5 and 17 miles)
- 17 mile flights executed June 25th - 28th
- Working with Academic and Healthcare partners to establish scale plans to serve entire Eastern Shore

Connecting and Supporting Communities: Capacity Building, Research, Resources



**CMU RURAL
HEALTH EQUITY
INSTITUTE**

CENTRAL MICHIGAN
UNIVERSITY

Improve Care Access

Community Partnership Outreach

Advance Rural Health Equity Data

Education and Training

Improving Rural Access to Mental Health Services via Telehealth Resources

Technology and IT to support and expand tele-mental health services in Central and Northern Michigan working with health providers, FQHCs, clinics, and schools. (HRSA funded projects)

Supporting Broadband Expansion and Digital Equity

Helping local communities engage with data to accelerate broadband adoption, increase access to care and resources, build capacity to increase high-speed internet accessibility

Collaborative Research Partner with Communities to Advance Data, Tools, and Innovative Solutions

- *Grand Traverse region pilot project to use drones, or unmanned aircraft systems, to test and scale the delivery of medical supplies and other critical healthcare services as an innovation to improve rural health outcomes.*
- Iosco County, Community-led Research on Non-Emergency Medical Transportation Needs for Older Adults
- [Suicide Prevention Toolkit for Health Providers](#) Preventing Suicide in Michigan Men (PRiSMM) statewide MDHHS/CDC funded initiative. Website, Toolkit and online course for health providers

Follow us on



<https://med.cmich.edu/RHEI> | email: rhei@cmich.edu

Michigan's Rural Communities – Innovation & Health Equity

Unique Vitalities

- Diverse and dynamic continuum includes communities experiencing rapid growth, economic transitions, and chronically impoverished
- 20% Michigan population
 - Diverse in age, experience, backgrounds
 - On-average older, higher rates of poverty and ALICE populations
- 94% of Michigan's land is rural; 70 counties are rural or mostly rural
- Largest employment sectors: education, healthcare and manufacturing

Innovation Opportunities:

- Timely turnaround of tests to avoid care delays
- Transport of equipment and supplies to serve patient needs nearby



Unresolved Vulnerabilities

- **Geographic provider supply disparities exist.** Parts of Northern Lower and much of the UP have little to no supply to meet important health care needs such as primary care, maternity and prenatal care, and behavioral health care.
- **Demographic trends for rural populations pose health challenges** (older adults, worsening health among working-age groups, chronic conditions, lower income, uninsured, barriers to access)
- **Rural-specific barriers to “affordable access”** of quality services for healthcare, education, childcare and high-speed internet, housing, and transportation.
- **Life expectancy by county in Michigan varies by as much as 8 years;** Michiganders in Leelanau County can expect to live more than 82 years, while those in Clare County have a life expectancy of 74 years.





**FOR MORE INFORMATION, VISIT:
[TRAVERSECONNECT.COM/AAM_PILOT](https://traverseconnect.com/aam_pilot)**